

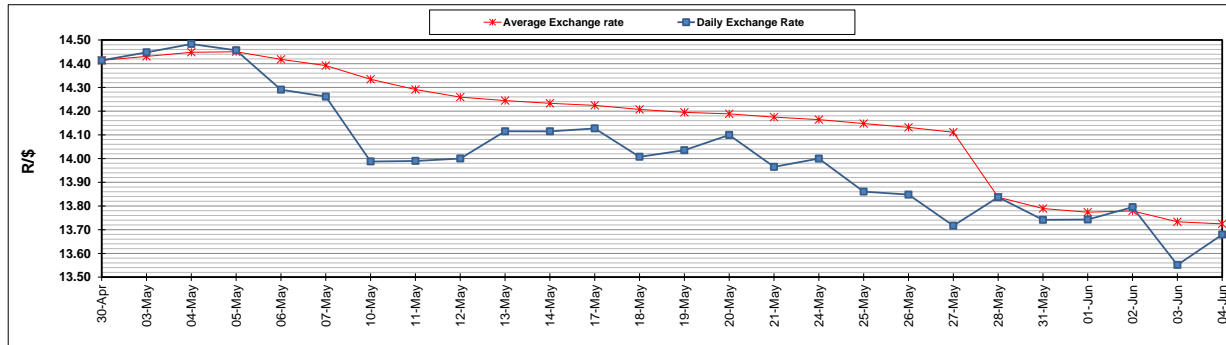
	PETROL 95 ULP	PETROL 93 ULP & LRP	DIESEL 0.05%	DIESEL 0.005%	ILL. PAR.
GAUTENG PUMP PRICE (SA c/l) AS FROM 02/06/2021	1,713.000	1,691.000	-	-	-
WHOLESALE PRICE (SA c/l) AS FROM 02/06/2021	-	-	1,466.620	1,471.020	877.488
SINGLE NATIONAL MAXIMUM RETAIL PRICE	-	-	-	-	1,102.000
BASIC FUEL PRICE - 04/06/2021 (SA c/l)	715.037	707.508	698.621	701.792	673.600
PRESS RELEASE CONTRIBUTION TO BFP 02/06/2021 - 04/06/2021 (SA c/l)	717.170	705.170	679.630	684.030	664.128
UNIT OVER/(UNDER) RECOVERY - 04/06/2021 (SA c/l)	2.133	(2.338)	(18.991)	(17.762)	(9.472)
AVERAGE BASIC FUEL PRICE 28/05/2021 - 04/06/2021	709.712	700.819	688.564	692.549	667.894
AVERAGE UNIT OVER/(UNDER) RECOVERY 28/05/2021 - 04/06/2021	12.458	9.351	(18.934)	(19.019)	(13.766)

ANALYSIS MOVEMENT OF AVERAGE OVER/(UNDER) RECOVERY

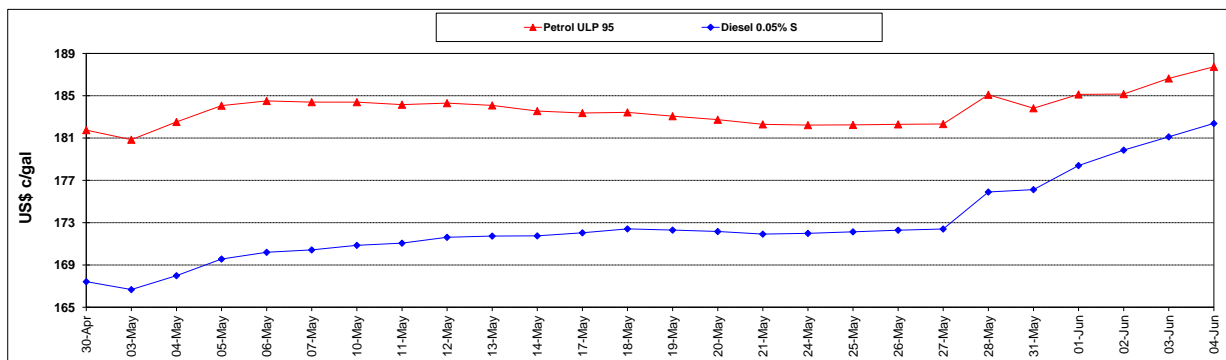
	PETROL 95	PETROL 93	DIESEL 0.05%	DIESEL 0.005%	ILL. PAR.
- MOVEMENT IN INTERNATIONAL PRODUCT PRICES	(7.528)	(10.385)	(38.325)	(38.522)	(32.575)
- MOVEMENT IN EXCHANGE RATE	19.986	19.736	19.391	19.503	18.809
AVERAGE UNIT OVER/(UNDER) RECOVERY 28/05/2021 - 04/06/2021	12.458	9.351	(18.934)	(19.019)	(13.766)

R/\$ EXCHANGE RATE - (R/\$13.6793- 04/06/2021)

EXCHANGE RATE USED IN BASIC FUEL PRICE



INTERNATIONAL PRODUCT PRICES OF BASKET USED IN BASIC FUEL PRICE



BASIC FUEL PRICE IN SA CENTS PER LITRE

