

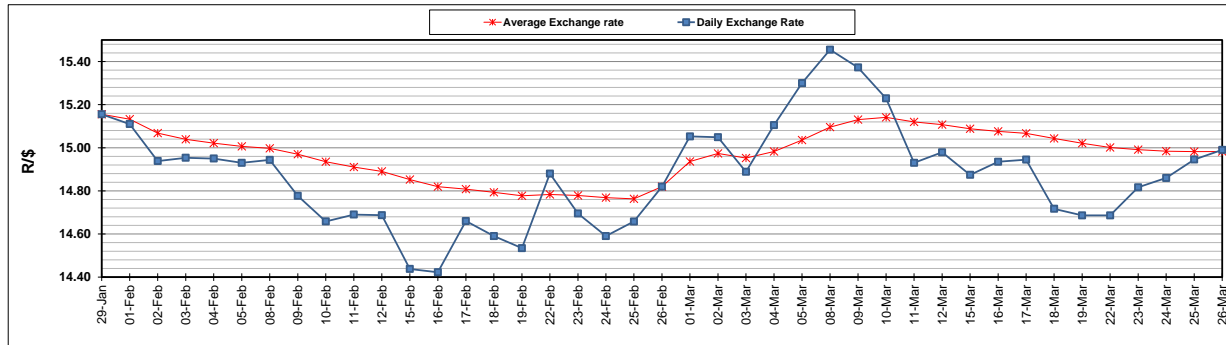
	PETROL 95 ULP	PETROL 93 ULP & LRP	DIESEL 0.05%	DIESEL 0.005%	ILL. PAR.
GAUTENG PUMP PRICE (SA c/l) AS FROM 03/03/2021	1,632.000	1,615.000	-	-	-
WHOLESALE PRICE (SA c/l) AS FROM 03/03/2021	-	-	1,412.420	1,416.820	845.688
SINGLE NATIONAL MAXIMUM RETAIL PRICE	-	-	-	-	1,071.000
BASIC FUEL PRICE - 26/03/2021 (SA c/l)	715.432	701.683	654.051	656.785	633.810
PRESS RELEASE CONTRIBUTION TO BFP 03/03/2021 - 26/03/2021 (SA c/l)	665.170	658.170	653.630	658.030	633.128
UNIT OVER/(UNDER) RECOVERY - 26/03/2021 (SA c/l)	(50.262)	(43.513)	(0.421)	1.245	(0.682)
AVERAGE BASIC FUEL PRICE 26/02/2021 - 26/03/2021	729.327	717.620	686.580	689.301	664.364
AVERAGE UNIT OVER/(UNDER) RECOVERY 26/02/2021 - 26/03/2021	(73.443)	(68.735)	(40.664)	(39.271)	(37.950)

### ANALYSIS MOVEMENT OF AVERAGE OVER/(UNDER) RECOVERY

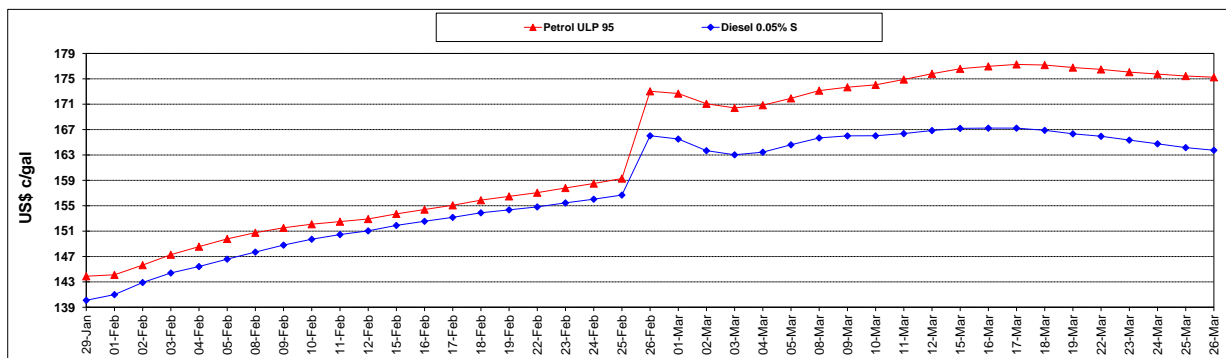
	PETROL 95	PETROL 93	DIESEL 0.05%	DIESEL 0.005%	ILL. PAR.
- MOVEMENT IN INTERNATIONAL PRODUCT PRICES	(62.753)	(58.218)	(30.601)	(29.168)	(28.212)
- MOVEMENT IN EXCHANGE RATE	(10.690)	(10.518)	(10.063)	(10.103)	(9.738)
AVERAGE UNIT OVER/(UNDER) RECOVERY 26/02/2021 - 26/03/2021	(73.443)	(68.735)	(40.664)	(39.271)	(37.950)

### R/\$ EXCHANGE RATE - (R/\$14.9900 - 26/03/2021)

#### EXCHANGE RATE USED IN BASIC FUEL PRICE



#### INTERNATIONAL PRODUCT PRICES OF BASKET USED IN BASIC FUEL PRICE



#### BASIC FUEL PRICE IN SA CENTS PER LITRE

