

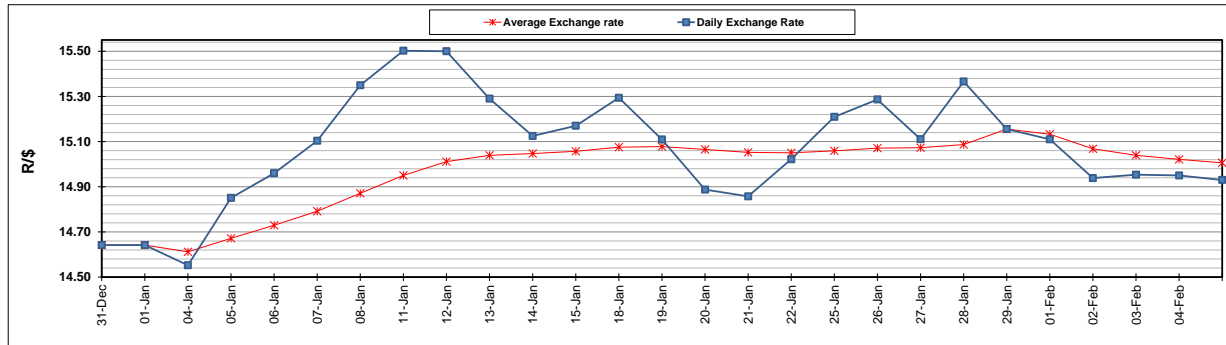
	PETROL 95 ULP	PETROL 93 ULP & LRP	DIESEL 0.05%	DIESEL 0.005%	ILL. PAR.
GAUTENG PUMP PRICE (SA c/l) AS FROM 03/02/2021	1,567.000	1,550.000	-	-	-
WHOLESALE PRICE (SA c/l) AS FROM 03/02/2021	-	-	1,358.420	1,360.820	798.688
SINGLE NATIONAL MAXIMUM RETAIL PRICE	-	-	-	-	1,008.000
BASIC FUEL PRICE - 05/02/2021 (SA c/l)	647.611	638.762	636.291	639.977	617.318
PRESS RELEASE CONTRIBUTION TO BFP 05/02/2021 - 03/02/2021 (SA c/l)	600.170	593.170	599.630	602.030	586.128
UNIT OVER/(UNDER) RECOVERY - 05/02/2021 (SA c/l)	(47.441)	(45.592)	(36.661)	(37.947)	(31.190)
AVERAGE BASIC FUEL PRICE 29/01/2021 - 05/02/2021	626.147	617.911	616.024	619.803	598.796
AVERAGE UNIT OVER/(UNDER) RECOVERY 29/01/2021 - 05/02/2021	(66.477)	(65.241)	(45.394)	(47.273)	(42.168)

### ANALYSIS MOVEMENT OF AVERAGE OVER/(UNDER) RECOVERY

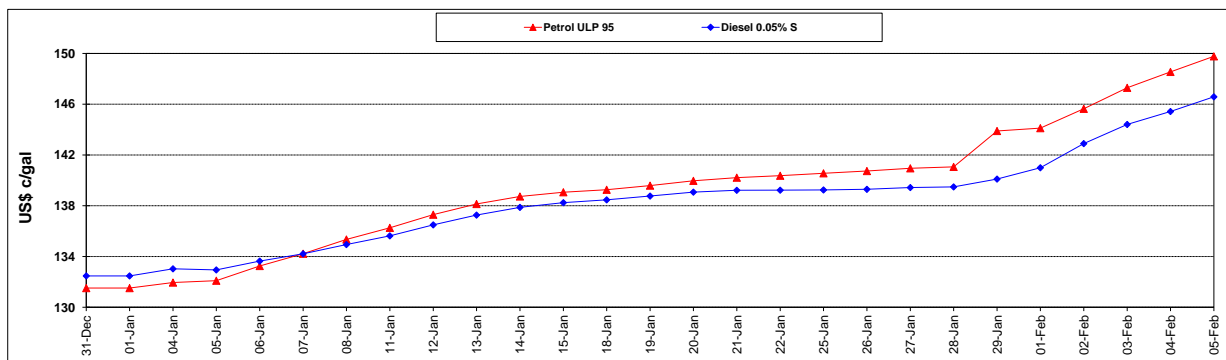
	PETROL 95	PETROL 93	DIESEL 0.05%	DIESEL 0.005%	ILL. PAR.
- MOVEMENT IN INTERNATIONAL PRODUCT PRICES	(69.853)	(68.572)	(48.715)	(50.614)	(45.396)
- MOVEMENT IN EXCHANGE RATE	3.376	3.331	3.321	3.341	3.228
AVERAGE UNIT OVER/(UNDER) RECOVERY 29/01/2021 - 05/02/2021	(66.477)	(65.241)	(45.394)	(47.273)	(42.168)

### R/\$ EXCHANGE RATE - (R/\$14.9300 - 05/02/2021)

#### EXCHANGE RATE USED IN BASIC FUEL PRICE



#### INTERNATIONAL PRODUCT PRICES OF BASKET USED IN BASIC FUEL PRICE



#### BASIC FUEL PRICE IN SA CENTS PER LITRE

