

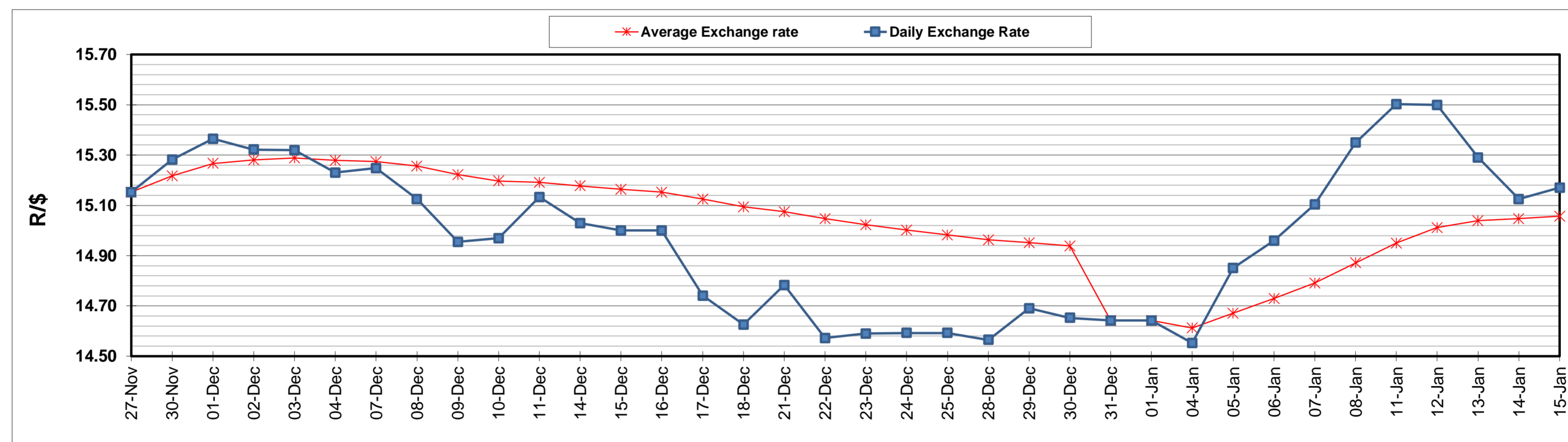
	PETROL 95 ULP	PETROL 93 ULP & LRP	DIESEL 0.05%	DIESEL 0.005%	ILL. PAR.
GAUTENG PUMP PRICE (SA c/l) AS FROM 06/01/2021	1,486.000	1,469.000	-	-	-
WHOLESALE PRICE (SA c/l) AS FROM 06/01/2021	-	-	1,300.420	1,301.820	739.688
SINGLE NATIONAL MAXIMUM RETAIL PRICE	-	-	-	-	930.000
BASIC FUEL PRICE - 15/01/2021 (SA c/l)	603.182	595.904	603.752	605.235	591.008
PRESS RELEASE CONTRIBUTION TO BFP 06/01/2021 - 15/01/2021 (SA c/l)	519.170	512.170	541.630	543.030	527.128
UNIT OVER/(UNDER) RECOVERY - 15/01/2021 (SA c/l)	(84.012)	(83.734)	(62.122)	(62.205)	(63.880)
AVERAGE BASIC FUEL PRICE 31/12/2020 - 15/01/2021	584.450	577.559	583.480	585.467	571.244
AVERAGE UNIT OVER/(UNDER) RECOVERY 31/12/2020 - 15/01/2021	(78.613)	(79.722)	(60.183)	(60.437)	(62.449)

### ANALYSIS MOVEMENT OF AVERAGE OVER/(UNDER) RECOVERY

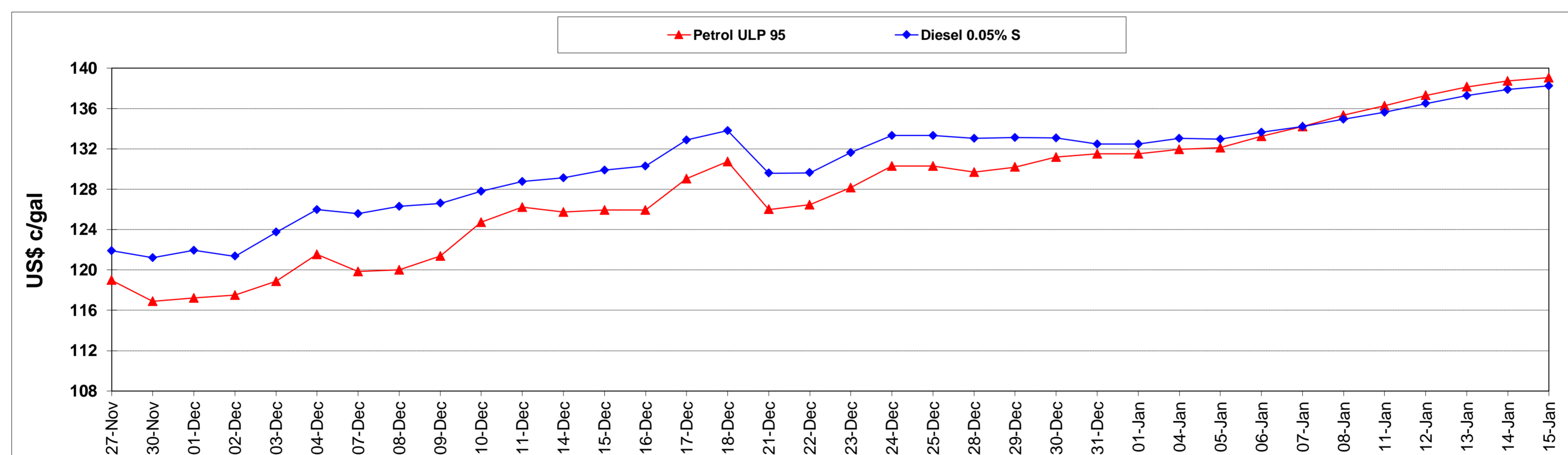
	PETROL 95	PETROL 93	DIESEL 0.05%	DIESEL 0.005%	ILL. PAR.
- MOVEMENT IN INTERNATIONAL PRODUCT PRICES	(74.025)	(75.188)	(55.603)	(55.841)	(57.965)
- MOVEMENT IN EXCHANGE RATE	(4.588)	(4.534)	(4.580)	(4.596)	(4.484)
AVERAGE UNIT OVER/(UNDER) RECOVERY 31/12/2020 - 15/01/2021	(78.613)	(79.722)	(60.183)	(60.437)	(62.449)

### R/\$ EXCHANGE RATE - (R/\$15.1700 - 15/01/2021)

#### EXCHANGE RATE USED IN BASIC FUEL PRICE



#### INTERNATIONAL PRODUCT PRICES OF BASKET USED IN BASIC FUEL PRICE



#### BASIC FUEL PRICE IN SA CENTS PER LITRE

