

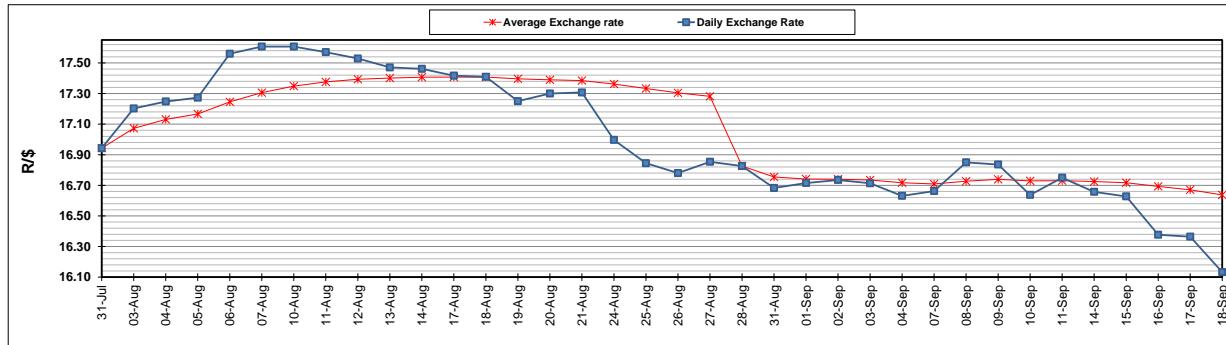
	PETROL 95 ULP	PETROL 93 ULP & LRP	DIESEL 0.05%	DIESEL 0.005%	ILL. PAR.
GAUTENG PUMP PRICE (SA c/l) AS FROM 02/09/2020	1,518.000	1,489.000	-	-	-
WHOLESALE PRICE (SA c/l) AS FROM 02/09/2020	-	-	1,327.560	1,331.960	716.828
SINGLE NATIONAL MAXIMUM RETAIL PRICE	-	-	-	-	899.000
BASIC FUEL PRICE - 18/09/2020 (SA c/l)	540.908	528.354	482.939	484.825	441.878
PRESS RELEASE CONTRIBUTION TO BFP 02/09/2020 - 18/09/2020 (SA c/l)	565.470	546.470	576.630	581.030	512.128
UNIT OVER/(UNDER) RECOVERY - 18/09/2020 (SA c/l)	24.562	18.116	93.691	96.205	70.250
AVERAGE BASIC FUEL PRICE 28/08/2020 - 18/09/2020	530.520	520.382	490.961	493.034	433.891
AVERAGE UNIT OVER/(UNDER) RECOVERY 28/08/2020 - 18/09/2020	35.757	26.894	89.606	91.933	83.112

ANALYSIS MOVEMENT OF AVERAGE OVER/(UNDER) RECOVERY

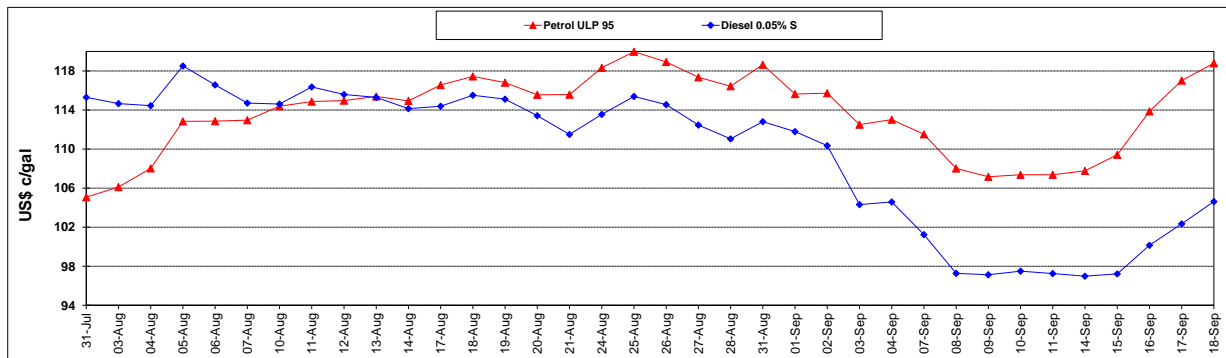
	PETROL 95	PETROL 93	DIESEL 0.05%	DIESEL 0.005%	ILL. PAR.
- MOVEMENT IN INTERNATIONAL PRODUCT PRICES	15.221	6.751	70.603	72.850	66.317
- MOVEMENT IN EXCHANGE RATE	20.535	20.143	19.004	19.084	16.795
AVERAGE UNIT OVER/(UNDER) RECOVERY 28/08/2020 - 18/09/2020	35.757	26.894	89.606	91.933	83.112

R/\$ EXCHANGE RATE - (R/\$16.1328 - 18/09/2020)

EXCHANGE RATE USED IN BASIC FUEL PRICE



INTERNATIONAL PRODUCT PRICES OF BASKET USED IN BASIC FUEL PRICE



BASIC FUEL PRICE IN SA CENTS PER LITRE

