

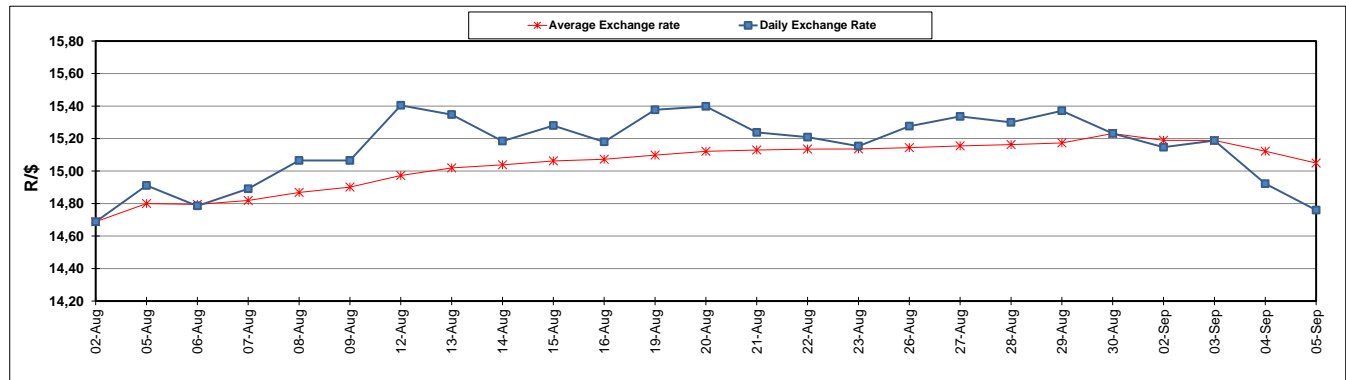
	PETROL 95 ULP	PETROL 93 ULP & LRP	DIESEL 0.05%	DIESEL 0.005%	ILL. PAR.
GAUTENG PUMP PRICE (SA c/l) AS FROM 04/09/2019	1 603,000	1 583,000	-	-	-
WHOLESALE PRICE (SA c/l) AS FROM 04/09/2019	-	-	1 459,210	1 463,610	936,678
SINGLE NATIONAL MAXIMUM RETAIL PRICE	-	-	-	-	1 195,000
BASIC FUEL PRICE - 05/09/2019 (SA c/l)	682,117	662,394	750,070	753,021	751,970
PRESS RELEASE CONTRIBUTION TO BFP 03/09/2019 - 05/09/2019 (SA c/l)	704,170	694,170	745,630	750,030	754,128
UNIT OVER/(UNDER) RECOVERY - 05/09/2019 (SA c/l)	22,053	31,776	(4,440)	(2,991)	2,158
AVERAGE BASIC FUEL PRICE 30/08/2019 - 05/09/2019	683,228	661,603	744,742	747,948	746,975
AVERAGE UNIT OVER/(UNDER) RECOVERY 30/08/2019 - 05/09/2019	14,342	25,967	(14,712)	(13,518)	(7,247)

### ANALYSIS MOVEMENT OF AVERAGE OVER/(UNDER) RECOVERY

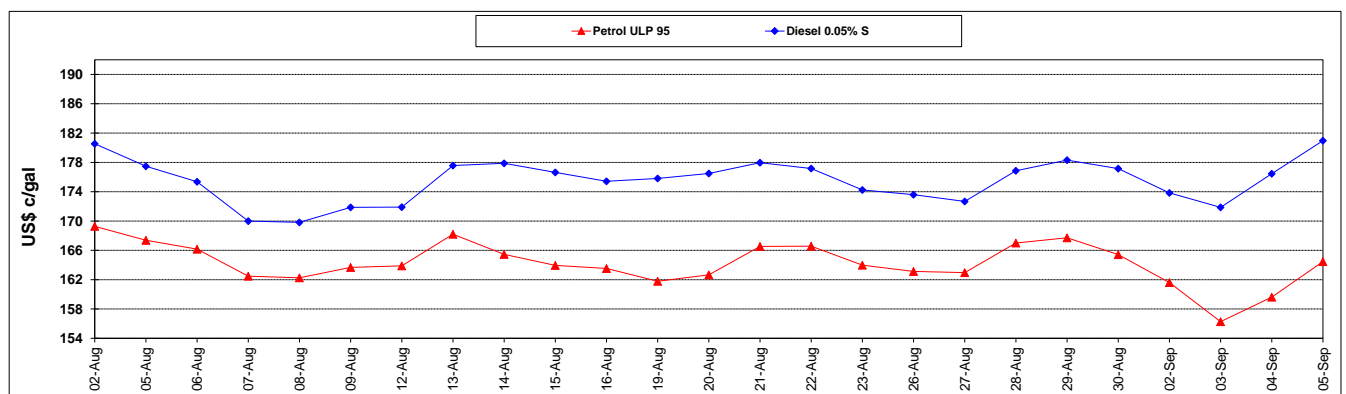
	PETROL 95	PETROL 93	DIESEL 0.05%	DIESEL 0.005%	ILL. PAR.
- MOVEMENT IN INTERNATIONAL PRODUCT PRICES	8,735	20,538	(20,824)	(19,656)	(13,377)
- MOVEMENT IN EXCHANGE RATE	5,607	5,429	6,112	6,138	6,130
AVERAGE UNIT OVER/(UNDER) RECOVERY 30/08/2019 - 05/09/2019	14,342	25,967	(14,712)	(13,518)	(7,247)

### R/\$ EXCHANGE RATE - (R/\$14.7598 - 05/09/2019)

#### EXCHANGE RATE USED IN BASIC FUEL PRICE



#### INTERNATIONAL PRODUCT PRICES OF BASKET USED IN BASIC FUEL PRICE



#### BASIC FUEL PRICE IN SA CENTS PER LITRE

