

	PETROL 95 ULP	PETROL 93 ULP & LRP	DIESEL 0.05%	DIESEL 0.005%	ILL. PAR.
GAUTENG PUMP PRICE (SA c/l) AS FROM 08/08/2019	1 592.000	1 572.000	-	-	-
WHOLESALE PRICE (SA c/l) AS FROM 08/08/2019	-	-	1 433.210	1 437.610	914.678
SINGLE NATIONAL MAXIMUM RETAIL PRICE	-	-	-	-	1 163.000
BASIC FUEL PRICE - 13/08/2019 (SA c/l)	723.548	698.328	765.092	768.766	766.606
PRESS RELEASE CONTRIBUTION TO BFP 07/08/2019 - 13/08/2019 (SA c/l)	693.170	683.170	719.630	724.030	730.128
UNIT OVER/(UNDER) RECOVERY - 13/08/2019 (SA c/l)	(30.378)	(15.158)	(45.462)	(44.736)	(36.478)
AVERAGE BASIC FUEL PRICE 02/08/2019 - 13/08/2019	697.146	675.286	735.883	739.691	740.804
AVERAGE UNIT OVER/(UNDER) RECOVERY 02/08/2019 - 13/08/2019	(9.744)	2.117	(12.878)	(11.911)	(9.926)

ANALYSIS MOVEMENT OF AVERAGE OVER/(UNDER) RECOVERY

- MOVEMENT IN INTERNATIONAL PRODUCT PRICES

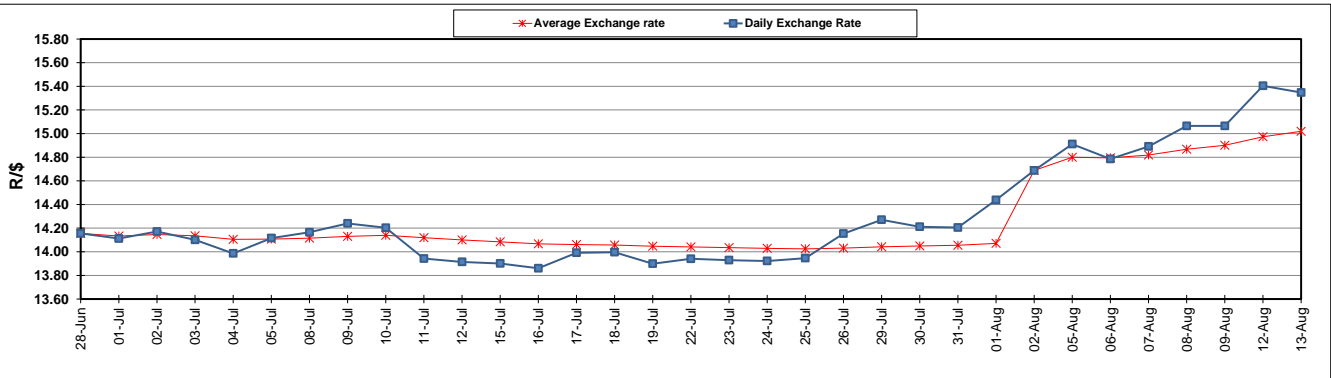
- MOVEMENT IN EXCHANGE RATE

AVERAGE UNIT OVER/(UNDER) RECOVERY 02/08/2019 - 13/08/2019

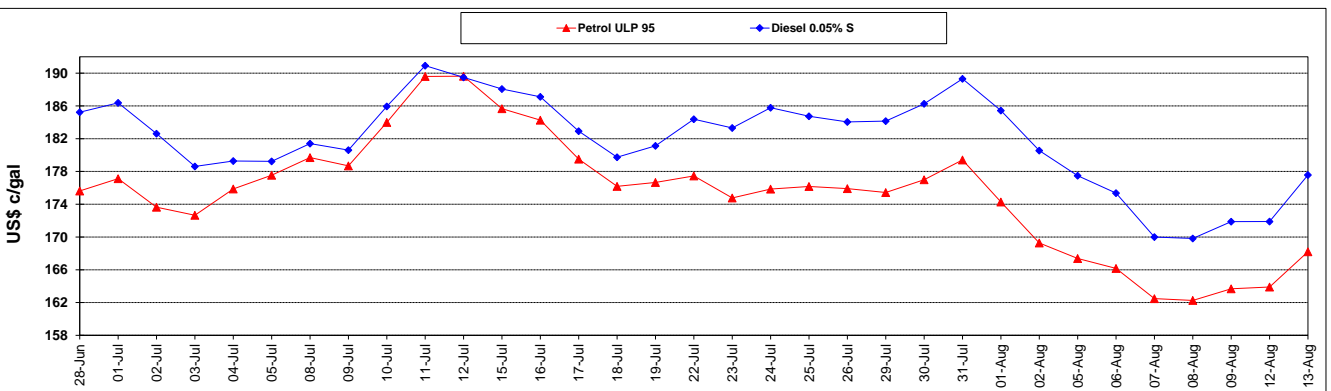
	PETROL 95	PETROL 93	DIESEL 0.05%	DIESEL 0.005%	ILL. PAR.
- MOVEMENT IN INTERNATIONAL PRODUCT PRICES	34.292	44.771	33.603	34.811	36.866
- MOVEMENT IN EXCHANGE RATE	(44.035)	(42.654)	(46.481)	(46.722)	(46.792)
AVERAGE UNIT OVER/(UNDER) RECOVERY 02/08/2019 - 13/08/2019	(9.744)	2.117	(12.878)	(11.911)	(9.926)

R/\$ EXCHANGE RATE - (R/\$15.3474 - 13/08/2019)

EXCHANGE RATE USED IN BASIC FUEL PRICE



INTERNATIONAL PRODUCT PRICES OF BASKET USED IN BASIC FUEL PRICE



BASIC FUEL PRICE IN SA CENTS PER LITRE

