

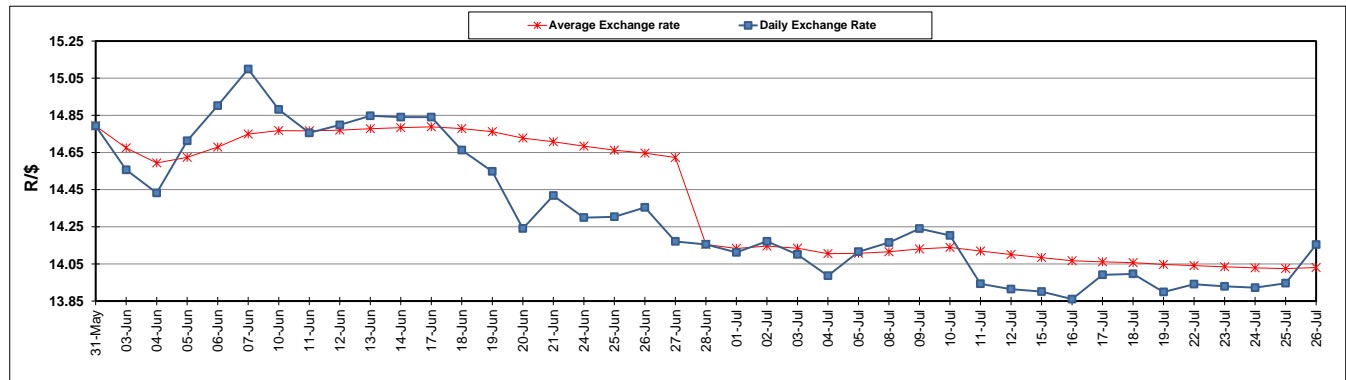
	PETROL 95 ULP	PETROL 93 ULP & LRP	DIESEL 0.05%	DIESEL 0.005%	ILL. PAR.
GAUTENG PUMP PRICE (SA c/l) AS FROM 03/07/2019	1 581.000	1 561.000	-	-	-
WHOLESALE PRICE (SA c/l) AS FROM 03/07/2019	-	-	1 446.500	1 451.900	916.678
SINGLE NATIONAL MAXIMUM RETAIL PRICE	-	-	-	-	1 165.000
BASIC FUEL PRICE - 26/07/2019 (SA c/l)	697.537	678.324	731.308	734.767	740.830
PRESS RELEASE CONTRIBUTION TO BFP 03/07/2019 - 26/07/2019 (SA c/l)	677.790	667.790	728.630	734.030	732.128
UNIT OVER/(UNDER) RECOVERY - 26/07/2019 (SA c/l)	(19.747)	(10.534)	(2.678)	(0.737)	(8.702)
AVERAGE BASIC FUEL PRICE 28/06/2019 - 26/07/2019	702.777	687.976	724.501	729.051	732.872
AVERAGE UNIT OVER/(UNDER) RECOVERY 28/06/2019 - 26/07/2019	(12.670)	(7.726)	13.558	14.550	7.398

ANALYSIS MOVEMENT OF AVERAGE OVER/(UNDER) RECOVERY

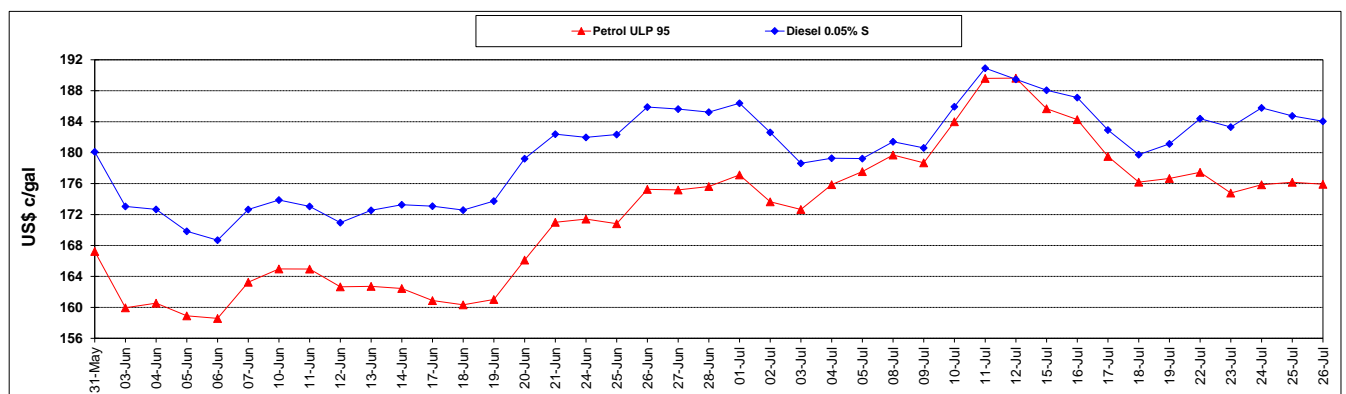
	PETROL 95	PETROL 93	DIESEL 0.05%	DIESEL 0.005%	ILL. PAR.
- MOVEMENT IN INTERNATIONAL PRODUCT PRICES	(42.322)	(36.754)	(17.011)	(16.211)	(23.523)
- MOVEMENT IN EXCHANGE RATE	29.652	29.028	30.569	30.761	30.922
AVERAGE UNIT OVER/(UNDER) RECOVERY 28/06/2019 - 26/07/2019	(12.670)	(7.726)	13.558	14.550	7.398

R/\$ EXCHANGE RATE - (R/\$14.1538 - 26/07/2019)

EXCHANGE RATE USED IN BASIC FUEL PRICE



INTERNATIONAL PRODUCT PRICES OF BASKET USED IN BASIC FUEL PRICE



BASIC FUEL PRICE IN SA CENTS PER LITRE

