

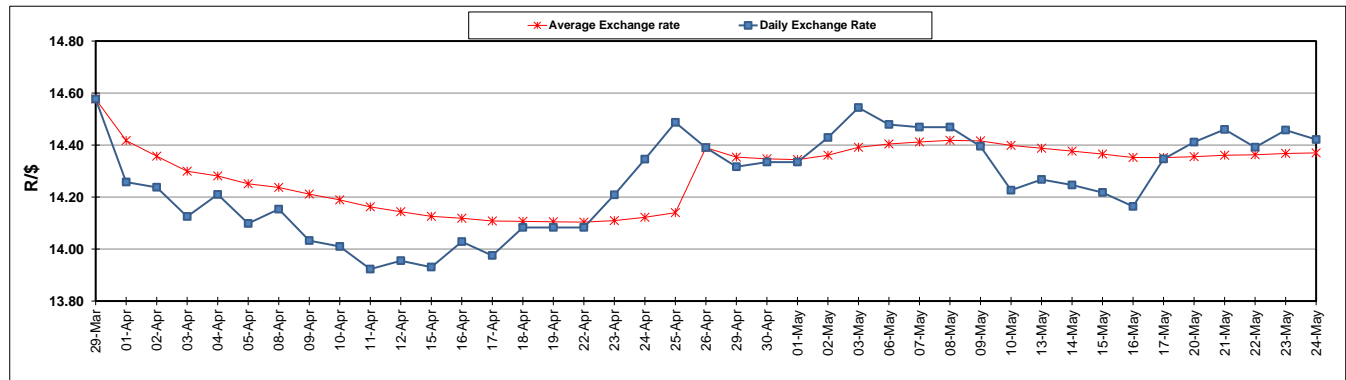
	PETROL 95 ULP	PETROL 93 ULP & LRP	DIESEL 0.05%	DIESEL 0.005%	ILL. PAR.
GAUTENG PUMP PRICE (SA c/l) AS FROM 01/05/2019	1 667.000	1 648.000	-	-	-
WHOLESALE PRICE (SA c/l) AS FROM 01/05/2019	-	-	1 488.120	1 494.520	965.678
SINGLE NATIONAL MAXIMUM RETAIL PRICE	-	-	-	-	1 231.000
BASIC FUEL PRICE - 24/05/2019 (SA c/l)	735.071	722.061	763.080	768.661	757.008
PRESS RELEASE CONTRIBUTION TO BFP 01/05/2019 - 24/05/2019 (SA c/l)	777.170	768.170	784.630	791.030	781.128
UNIT OVER/(UNDER) RECOVERY - 24/05/2019 (SA c/l)	42.099	46.109	21.550	22.369	24.120
AVERAGE BASIC FUEL PRICE 26/04/2019 - 24/05/2019	760.369	749.251	796.664	803.580	791.172
AVERAGE UNIT OVER/(UNDER) RECOVERY 26/04/2019 - 24/05/2019	9.086	11.204	(12.177)	(12.550)	(10.473)

ANALYSIS MOVEMENT OF AVERAGE OVER/(UNDER) RECOVERY

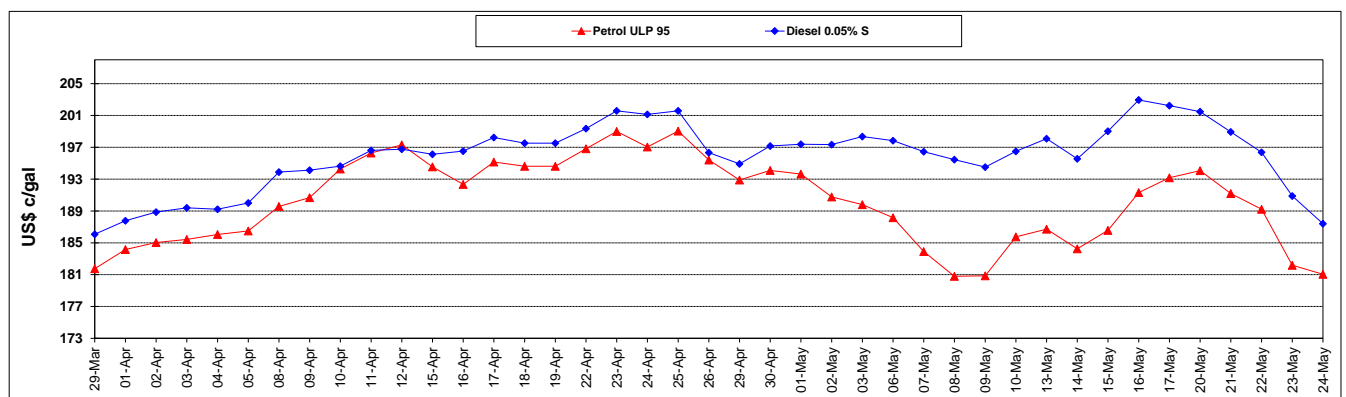
	PETROL 95	PETROL 93	DIESEL 0.05%	DIESEL 0.005%	ILL. PAR.
- MOVEMENT IN INTERNATIONAL PRODUCT PRICES	21.247	23.187	0.563	0.301	2.179
- MOVEMENT IN EXCHANGE RATE	(12.160)	(11.982)	(12.740)	(12.851)	(12.652)
AVERAGE UNIT OVER/(UNDER) RECOVERY 26/04/2019 - 24/05/2019	9.086	11.204	(12.177)	(12.550)	(10.473)

R/\$ EXCHANGE RATE - (R/\$14.4213 - 24/05/2019)

EXCHANGE RATE USED IN BASIC FUEL PRICE



INTERNATIONAL PRODUCT PRICES OF BASKET USED IN BASIC FUEL PRICE



BASIC FUEL PRICE IN SA CENTS PER LITRE

