

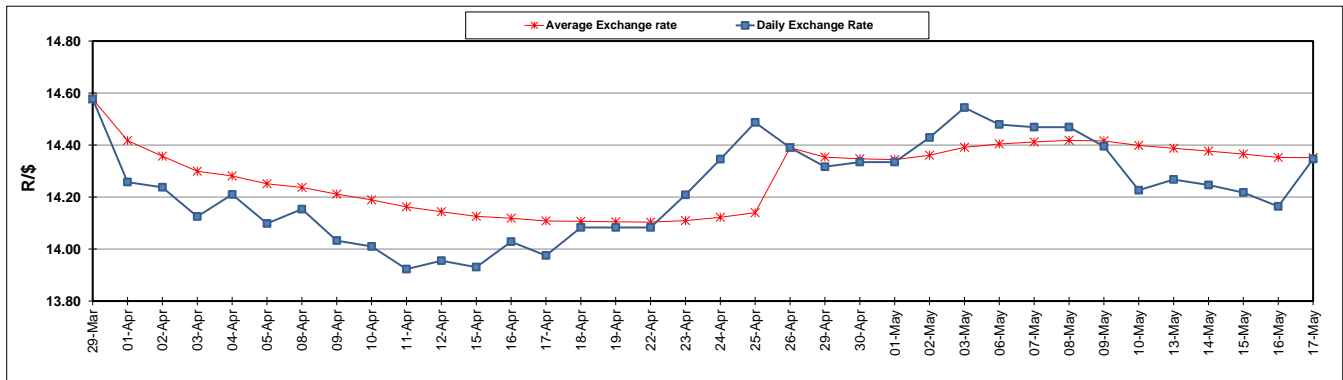
	PETROL 95 ULP	PETROL 93 ULP & LRP	DIESEL 0.05%	DIESEL 0.005%	ILL. PAR.
GAUTENG PUMP PRICE (SA c/l) AS FROM 01/05/2019	1 667.000	1 648.000	-	-	-
WHOLESALE PRICE (SA c/l) AS FROM 01/05/2019	-	-	1 488.120	1 494.520	965.678
SINGLE NATIONAL MAXIMUM RETAIL PRICE	-	-	-	-	1 231.000
BASIC FUEL PRICE - 17/05/2019 (SA c/l)	777.479	766.594	815.765	823.866	814.999
PRESS RELEASE CONTRIBUTION TO BFP 01/05/2019 - 17/05/2019 (SA c/l)	777.170	768.170	784.630	791.030	781.128
UNIT OVER/(UNDER) RECOVERY - 17/05/2019 (SA c/l)	(0.309)	1.576	(31.135)	(32.836)	(33.871)
AVERAGE BASIC FUEL PRICE 26/04/2019 - 17/05/2019	760.396	749.354	797.919	804.893	792.184
AVERAGE UNIT OVER/(UNDER) RECOVERY 26/04/2019 - 17/05/2019	6.649	8.691	(13.477)	(13.863)	(11.618)

ANALYSIS MOVEMENT OF AVERAGE OVER/(UNDER) RECOVERY

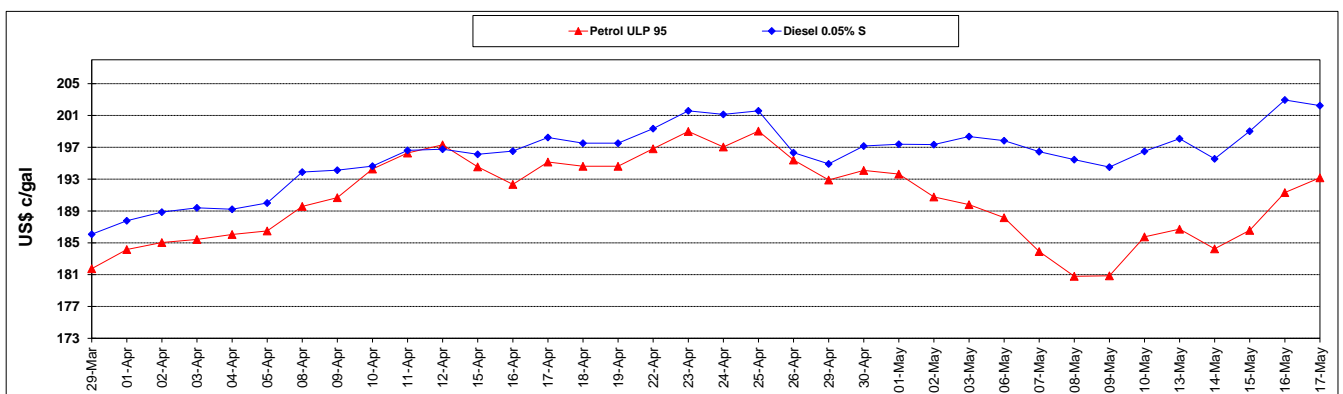
	PETROL 95	PETROL 93	DIESEL 0.05%	DIESEL 0.005%	ILL. PAR.
- MOVEMENT IN INTERNATIONAL PRODUCT PRICES	17.860	19.739	(1.712)	(1.996)	0.062
- MOVEMENT IN EXCHANGE RATE	(11.211)	(11.048)	(11.764)	(11.867)	(11.680)
AVERAGE UNIT OVER/(UNDER) RECOVERY 26/04/2019 - 17/05/2019	6.649	8.691	(13.477)	(13.863)	(11.618)

R/\$ EXCHANGE RATE - (R/\$14.3463 - 17/05/2019)

EXCHANGE RATE USED IN BASIC FUEL PRICE



INTERNATIONAL PRODUCT PRICES OF BASKET USED IN BASIC FUEL PRICE



BASIC FUEL PRICE IN SA CENTS PER LITRE

