

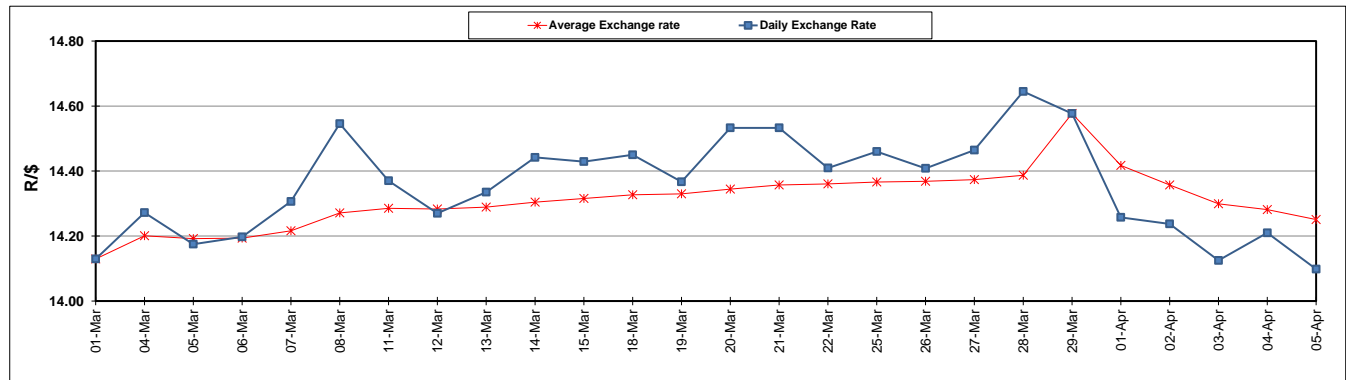
	PETROL 95 ULP	PETROL 93 ULP & LRP	DIESEL 0.05%	DIESEL 0.005%	ILL. PAR.
GAUTENG PUMP PRICE (SA c/l) AS FROM 03/04/2019	1 613.000	1 594.000	-	-	-
WHOLESALE PRICE (SA c/l) AS FROM 03/04/2019	-	-	1 487.120	1 494.520	962.678
SINGLE NATIONAL MAXIMUM RETAIL PRICE	-	-	-	-	1 227.000
BASIC FUEL PRICE - 05/04/2019 (SA c/l)	738.953	728.855	755.691	761.545	754.642
PRESS RELEASE CONTRIBUTION TO BFP 03/04/2019 - 05/04/2019 (SA c/l)	723.170	714.170	783.630	791.030	778.128
UNIT OVER/(UNDER) RECOVERY - 05/04/2019 (SA c/l)	(15.783)	(14.685)	27.939	29.485	23.486
AVERAGE BASIC FUEL PRICE 29/03/2019 - 05/04/2019	740.684	730.856	758.488	764.790	758.246
AVERAGE UNIT OVER/(UNDER) RECOVERY 29/03/2019 - 05/04/2019	(70.364)	(71.036)	(2.858)	(2.260)	(8.118)

### ANALYSIS MOVEMENT OF AVERAGE OVER/(UNDER) RECOVERY

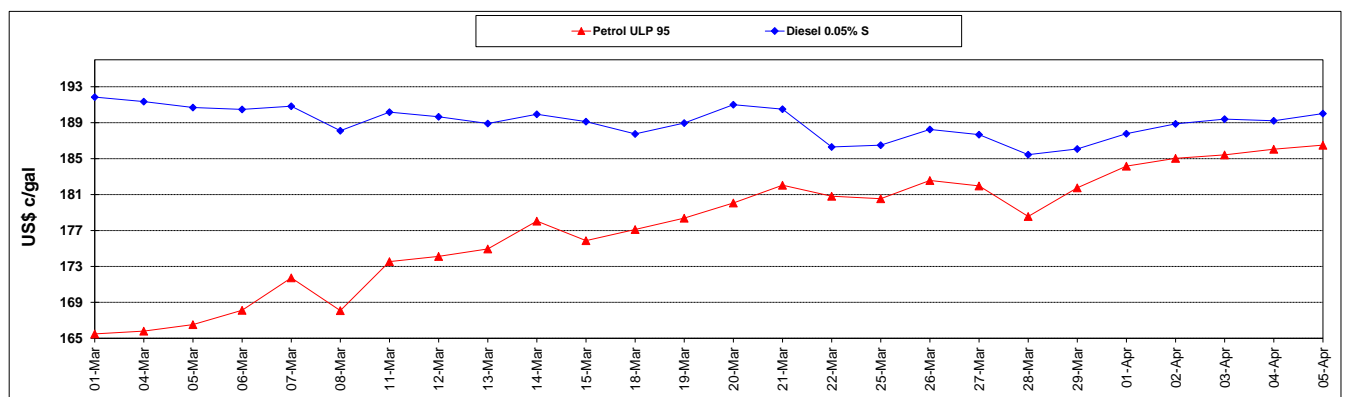
	PETROL 95	PETROL 93	DIESEL 0.05%	DIESEL 0.005%	ILL. PAR.
- MOVEMENT IN INTERNATIONAL PRODUCT PRICES	(77.448)	(78.026)	(10.112)	(9.575)	(15.370)
- MOVEMENT IN EXCHANGE RATE	7.084	6.990	7.254	7.315	7.252
AVERAGE UNIT OVER/(UNDER) RECOVERY 29/03/2019 - 05/04/2019	(70.364)	(71.036)	(2.858)	(2.260)	(8.118)

### R/\$ EXCHANGE RATE - (R/\$14.0983 - 05/04/2019)

#### EXCHANGE RATE USED IN BASIC FUEL PRICE



#### INTERNATIONAL PRODUCT PRICES OF BASKET USED IN BASIC FUEL PRICE



#### BASIC FUEL PRICE IN SA CENTS PER LITRE

