

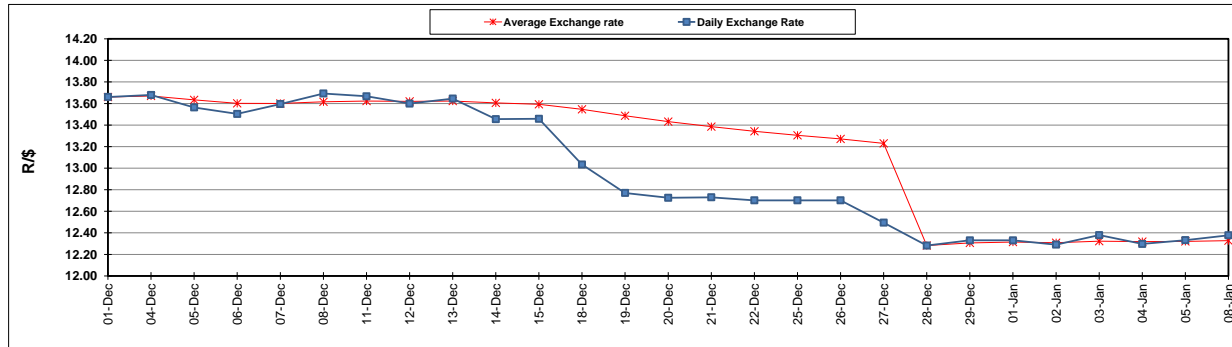
	PETROL 95 ULP	PETROL 93 ULP & LRP	DIESEL 0.05%	DIESEL 0.005%	ILL. PAR.
GAUTENG PUMP PRICE (SA c/l) AS FROM 03/01/2018	1 442.000	1 420.000	-	-	-
WHOLESALE PRICE (SA c/l) AS FROM 03/01/2018	-	-	1 273.630	1 276.030	837.388
SINGLE NATIONAL MAXIMUM RETAIL PRICE	-	-	-	-	1 082.000
BASIC FUEL PRICE - 08/01/2018 (SA c/l)	618.698	609.995	647.746	650.647	648.341
PRESS RELEASE CONTRIBUTION TO BFP 03/01/2018 - 08/01/2018 (SA c/l)	652.170	640.170	662.630	665.030	667.128
UNIT OVER/(UNDER) RECOVERY - 08/01/2018 (SA c/l)	33.472	30.175	14.884	14.383	18.787
AVERAGE BASIC FUEL PRICE 28/12/2017 - 08/01/2018	615.929	606.353	643.098	645.504	645.445
AVERAGE UNIT OVER/(UNDER) RECOVERY 28/12/2017 - 08/01/2018	53.241	48.318	30.532	32.526	35.683

ANALYSIS MOVEMENT OF AVERAGE OVER/(UNDER) RECOVERY

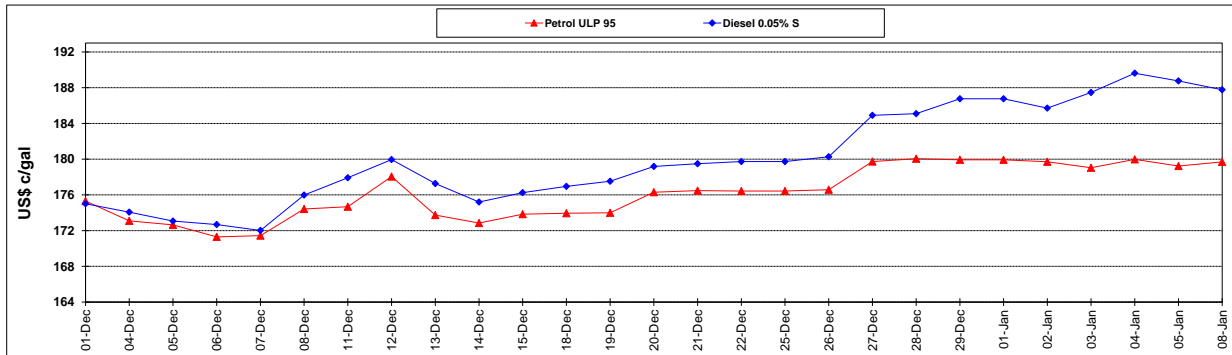
	PETROL 95	PETROL 93	DIESEL 0.05%	DIESEL 0.005%	ILL. PAR.
- MOVEMENT IN INTERNATIONAL PRODUCT PRICES	8.139	3.916	(16.559)	(14.742)	(11.580)
- MOVEMENT IN EXCHANGE RATE	45.102	44.401	47.091	47.268	47.263
AVERAGE UNIT OVER/(UNDER) RECOVERY 28/12/2017 - 08/01/2018	53.241	48.318	30.532	32.526	35.683

R/\$ EXCHANGE RATE - (R/\$ 12.3775 - 08/01/2018)

EXCHANGE RATE USED IN BASIC FUEL PRICE



INTERNATIONAL PRODUCT PRICES OF BASKET USED IN BASIC FUEL PRICE



BASIC FUEL PRICE IN SA CENTS PER LITRE

